

Product Spec Sheet

Name: Overhead Sliding Door Closer

Code: TYPEIII



Specification

Usage:

Light-weight doors in homes

Material:

Aluminium & steel

Finishes:

SE

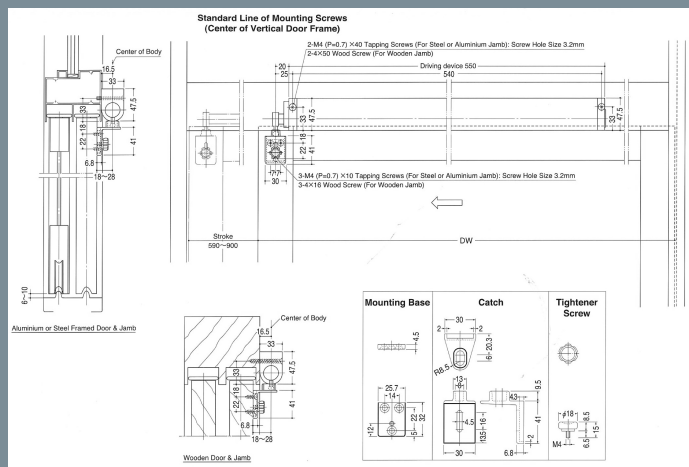
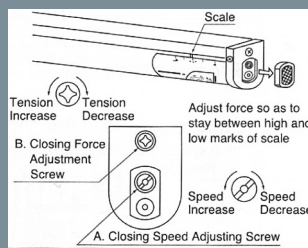
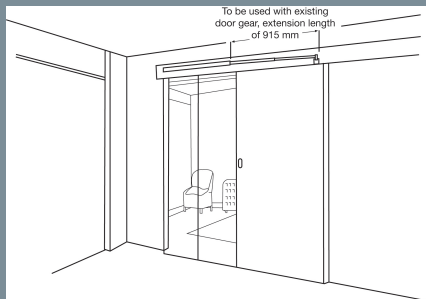
Fixings:

Wood screws

Declaration of Performance:

N/A

Dimensional Drawing & Situation Drawing:



Note:

Max door weight 40kg